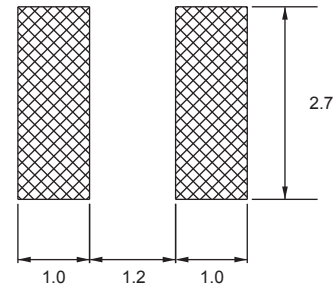
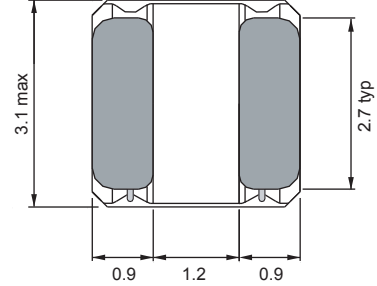
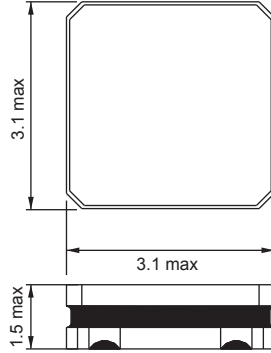
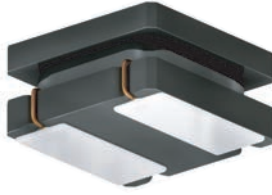


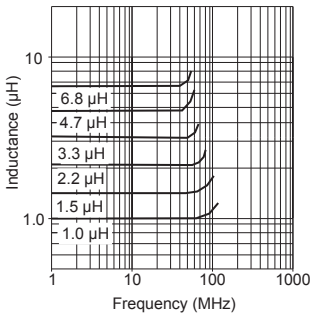
1212 FPS

Shielded

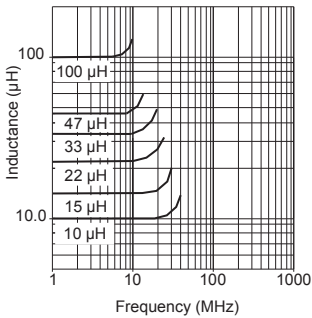


Recommended layout for solder pads

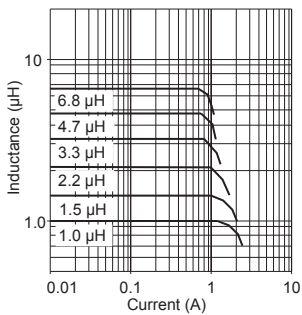
Typical Ls vs Frequency (f)



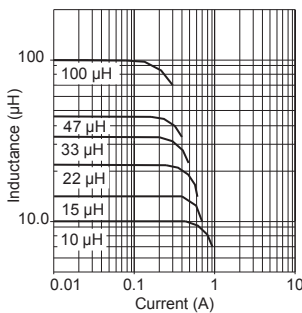
Typical Ls vs Frequency (f)



Typical Ls vs Current (I)



Typical Ls vs Current (I)



Part No	Inductance	f_L	Tol	SRF	DCR (Ω)		Rated DC Current (A)			
	L (μ H)	(MHz)	\pm (%)	min (MHz)	typ	max	I_{sat}		I_{rms}	
1212FPS-1R0X-01	1.0	1.0	20,30	145	0.040	0.048	2.35	2.10	2.35	2.10
1212FPS-1R5X-01	1.5	1.0	20,30	130	0.055	0.066	2.00	1.80	2.10	1.90
1212FPS-2R2X-01	2.2	1.0	20,30	90	0.060	0.072	1.65	1.48	1.80	1.60
1212FPS-3R3X-01	3.3	1.0	20,30	75	0.093	0.112	1.40	1.21	1.60	1.45
1212FPS-4R7X-01	4.7	1.0	20,30	65	0.113	0.136	1.20	1.08	1.40	1.25
1212FPS-6R8X-01	6.8	1.0	20,30	50	0.176	0.211	1.05	0.90	1.10	0.90
1212FPS-100X-01	10	1.0	20,30	45	0.234	0.276	0.88	0.75	1.00	0.87
1212FPS-150X-01	15	1.0	20,30	33	0.352	0.422	0.68	0.58	0.80	0.65
1212FPS-220X-01	22	1.0	20,30	28	0.510	0.622	0.58	0.47	0.60	0.55
1212FPS-330X-01	33	1.0	20,30	22	0.799	0.959	0.46	0.39	0.50	0.45
1212FPS-470X-01	47	1.0	20,30	18	1.172	1.406	0.38	0.32	0.40	0.40
1212FPS-101X-01	100	1.0	20,30	11	2.433	2.920	0.27	0.23	0.29	0.25

Material : Ferrite

Revision date : 10 Oct 2012

SPQ : Reel 2000 [-01]

Chip Inductors for Power Applications